



IRON PLANTER

# Iron Planter

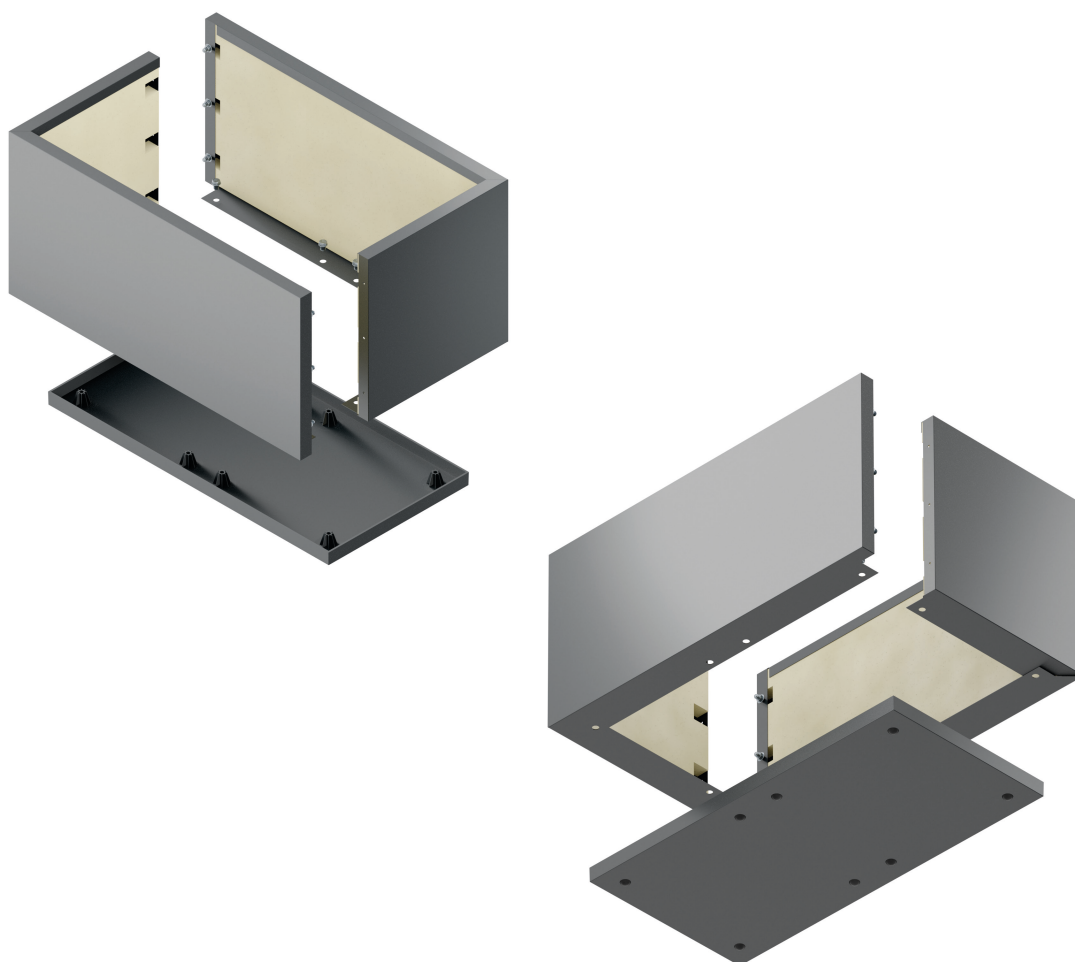
Iron Planter is a brand by **Domino the Modular Planter**, created to offer solutions in high-quality metal for outdoor furnishing. It combines solidity, functionality, and essential aesthetics to enhance any outdoor space.

**Easy Line** is designed for those looking for simplicity and durability in a **Made in Italy** design.

These planters are made of **15/10 galvanized and powder-coated metal**, with oven curing to ensure a durable finish.

Each model is delivered **disassembled, with a wear-resistant plastic base and insulated structure**, ensuring greater efficiency and ease of use.

Available in various **sizes and heights**, they adapt perfectly to any outdoor space, combining strength and style in a perfect balance of resilience and elegance.



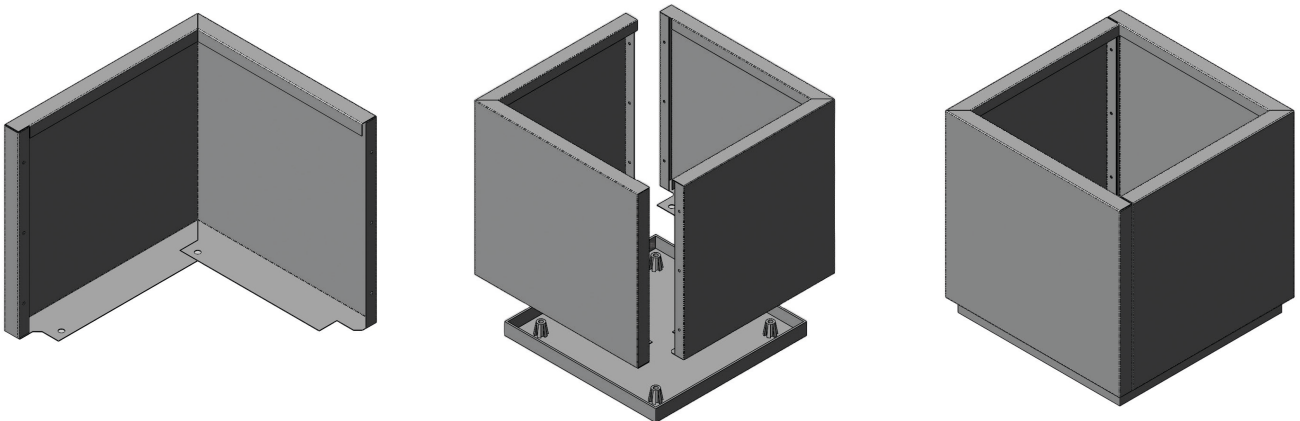
## High-Quality Materials

Made of **galvanized metal**, powder-coated and oven-cured, the planters are weather-resistant and ensure long-lasting durability, maintaining their original beauty.

## Wear-Resistant Plastic Base

The **plastic** base is designed to resist wear over time and is equipped with 4 feet of 1 cm.

Strong and durable, it is guaranteed for life, ensuring flawless stability and additional protection for your plants.



## Integrated Insulation

Each planter comes **insulated** with a 30mm extruded polystyrene insulation panel. This layer creates a thermal barrier between the metal and the soil, protecting the roots from both cold and excessive heat.

## Easy and Quick to Assemble

Iron Planter planters are supplied **disassembled** to facilitate transport and delivery to upper floors. A simple and fast assembly allows you to have containers ready in just a few steps to welcome your favorite plants.

# Easy Line h55

## Easy 01-55



**External dimensions:** 54x54 cm h 55 cm  
**Internal volume:** 120 lt  
**Weight:** 20 kg

## Easy 02-55



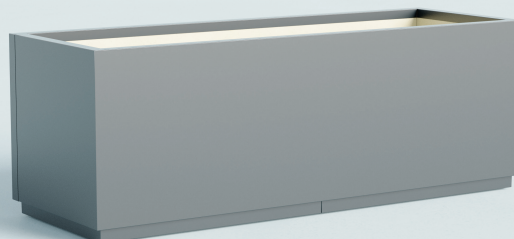
**External dimensions:** 104x104 cm h 55 cm  
**Internal volume:** 480 lt  
**Weight:** 42 kg

## Easy 03-55



**External dimensions:** 54x104 cm h 55 cm  
**Internal volume:** 240 lt  
**Weight:** 31 kg

## Easy 04-55



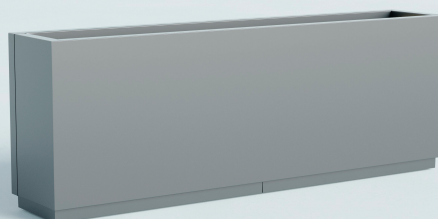
**External dimensions:** 54x154 cm h 55 cm  
**Internal volume:** 360 lt  
**Weight:** 41 kg

## Easy 05-55-29



**External dimensions:** 29x104 cm h 55 cm  
**Internal volume:** 120 lt  
**Weight:** 26 kg

## Easy 06-55-29

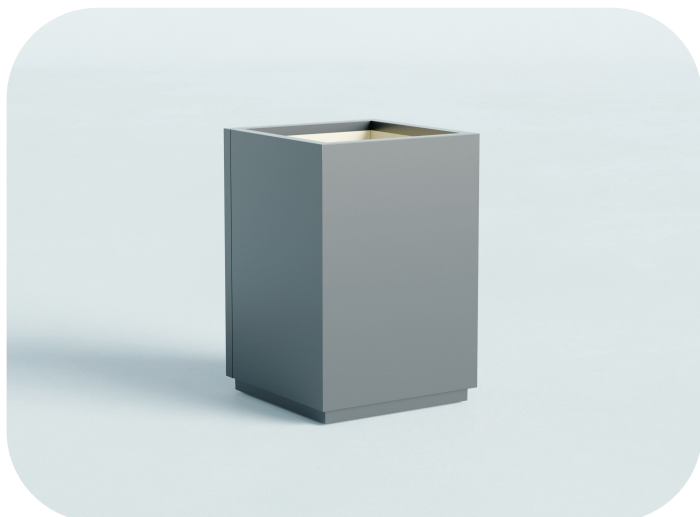


**External dimensions:** 29x154 cm h 55 cm  
**Internal volume:** 180 lt  
**Weight:** 36 kg



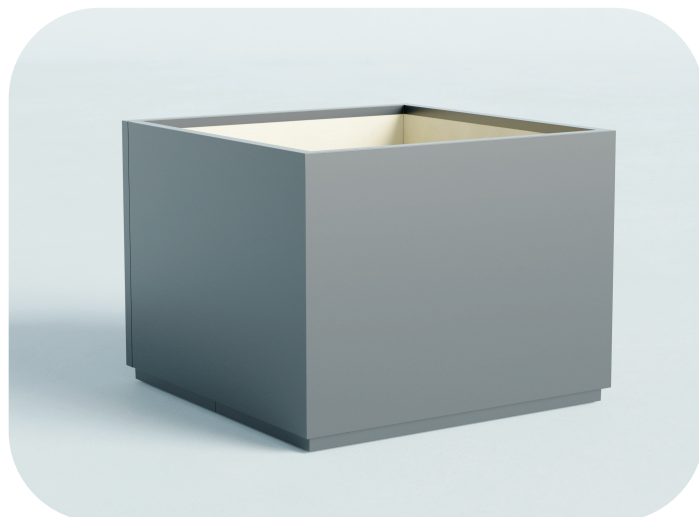
## Easy Line h80

**Easy 01-80**



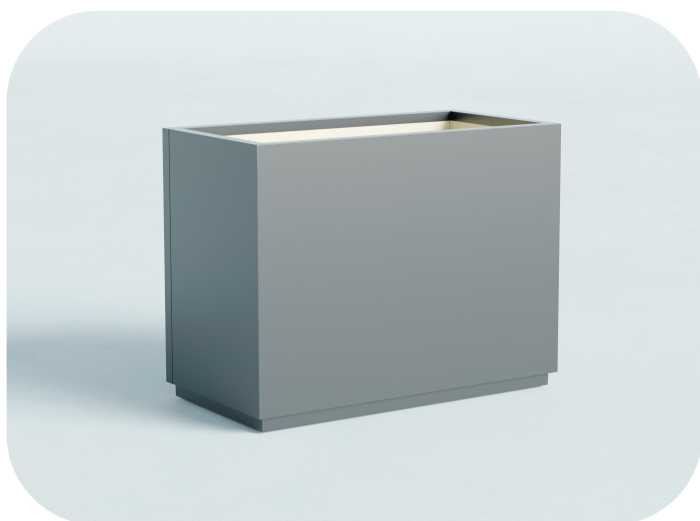
**External dimensions:** 54x54 cm h80 cm  
**Internal volume:** 180 lt  
**Weight:** 30 kg

**Easy 02-80**



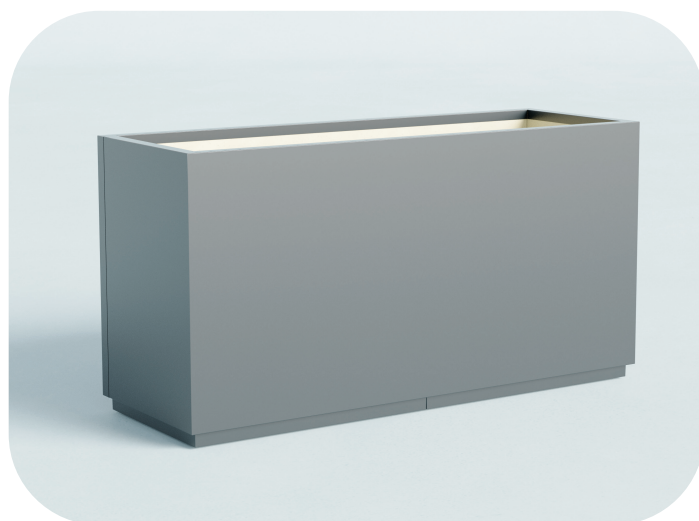
**External dimensions:** 104x104 cm h 80cm  
**Internal volume:** 720 lt  
**Weight:** 65 kg

**Easy 03-80**



**External dimensions:** 54x104 cm h 80cm  
**Internal volume:** 360 lt  
**Weight:** 47 kg

**Easy 04-80**



**External dimensions:** 54x154 cm h 80cm  
**Internal volume:** 540 lt  
**Weight:** 62 kg

# Technical information

## Easy Line

Simplicity and functionality in an essential **Made in Italy** design.

Easy Line planters combine resistance and practicality thanks to the 15/10 metal structure, galvanized and powder-coated, oven-baked for a durable finish.

Perfect for enhancing any outdoor space, ensuring solidity and style.

### Available colors

#### *Painted Metal*



White  
RAL 9010

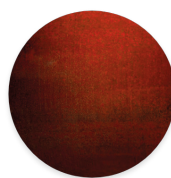


Silver  
RAL 7046

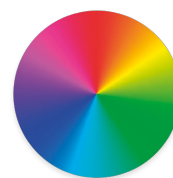


Dark Grey  
RAL 7016

#### *Corten Metal*



Corten



Custom RAL  
with surcharge









*It is a brand of Domino Srl*